

## City of Glendale - Weekly CAR Report (by occurrence date)

City of Glendale - Weekly CAR Report (by occurrence date)									
	Past 4 Weeks				Current Year to Date		Last Year to Date		
PART 1 - Person Crimes	07/22/2007 to 07/28/2007	07/29/2007 to 08/04/2007	08/05/2007 to 08/11/2007	08/12/2007 to 08/18/2007	Current Yr to Date - as of 08/18/2007	Current Yr to Date - Daily Avg:	Last Yr to Date - as of 8/18/2006	Last Yr to Date - Daily Avg:	% Change Last Yr vs. Current Yr
Homicide	0	1	1	1	9	0	11	0	-18.18%
Rape	4	1	0	3	38	0	49	0	-22.45%
Robbery	6	8	11	9	308	1	275	1	12.00%
Agg/Assault	16	22	18	24	603	3	625	3	-3.52%
<b>TOTAL- Person Crimes</b>	<b>26</b>	<b>32</b>	<b>30</b>	<b>37</b>	<b>958</b>	<b>1</b>	<b>960</b>	<b>1</b>	<b>-0.21%</b>
	Past 4 Weeks				Current Year to Date		Last Year to Date		
PART 1 - Property Crimes	07/22/2007 to 07/28/2007	07/29/2007 to 08/04/2007	08/05/2007 to 08/11/2007	08/12/2007 to 08/18/2007	Current Yr to Date - as of 08/18/2007	Current Yr to Date - Daily Avg:	Last Yr to Date - as of 8/18/2006	Last Yr to Date - Daily Avg:	% Change Last Yr vs. Current Yr
Burglary	52	42	49	52	1576	7	2184	9	-27.84%
Larceny-Theft	145	116	109	106	4103	18	3156	14	30.01%
Stolen Motor Veh	40	49	56	47	2066	9	1561	7	32.35%
Arson	0	2	1	0	49	0	55	0	-10.91%
<b>TOTAL- Property Crimes</b>	<b>237</b>	<b>209</b>	<b>215</b>	<b>205</b>	<b>7794</b>	<b>8</b>	<b>6956</b>	<b>8</b>	<b>12.05%</b>
<b>Total Part 1 Crimes</b>	<b>263</b>	<b>241</b>	<b>245</b>	<b>242</b>	<b>8752</b>	<b>38</b>	<b>7916</b>	<b>34</b>	<b>10.56%</b>
	Past 4 Weeks				Current Year to Date		Last Year to Date		
PART II Crimes	07/22/2007 to 07/28/2007	07/29/2007 to 08/04/2007	08/05/2007 to 08/11/2007	08/12/2007 to 08/18/2007	Current Yr to Date - as of 08/18/2007	Current Yr to Date - Daily Avg:	Last Yr to Date - as of 8/18/2006	Last Yr to Date - Daily Avg:	% Change Last Yr vs. Current Yr
Simple Assault	60	70	57	69	2179	9	1966	9	10.83%
Forgery/Embezzlement/Fraud	14	18	10	6	497	2	349	2	42.41%
Stolen Property	3	2	5	0	99	0	106	0	-6.60%
Vandalism	69	62	57	63	2386	10	2401	10	-0.62%
Weapons Violations	4	4	7	4	180	1	135	1	33.33%
Sex Offenses (Prostitution/Sex offenses)	8	3	2	4	193	1	197	1	-2.03%
Drugs	29	28	24	37	1256	5	1132	5	10.95%
Offense Against Family/Children	8	8	11	5	245	1	231	1	6.06%
DUI	15	15	23	21	691	3	597	3	15.75%
Liquor Violations	5	7	7	4	235	1	163	1	44.17%
Disorderly Conduct	12	12	11	16	520	2	559	2	-6.98%
Vagrancy	0	0	0	0	7	0	3	0	133.33%
Other Offenses	89	85	82	70	2692	12	4731	21	-43.10%
Curfew & Loitering	0	4	6	1	45	0	31	0	45.16%
Runaway	35	33	24	25	972	4	998	4	-2.61%
<b>TOTAL- Part II Crimes</b>	<b>351</b>	<b>351</b>	<b>326</b>	<b>325</b>	<b>12197</b>	<b>4</b>	<b>13599</b>	<b>4</b>	<b>-10.31%</b>
<b>Total Part I and II Crimes</b>	<b>614</b>	<b>592</b>	<b>571</b>	<b>567</b>	<b>20949</b>	<b>91</b>	<b>21515</b>	<b>94</b>	<b>-2.63%</b>

## Report Entry Statistics for Current Year to Date and Last Year to Date

*In the most current week, there have been a total of 695 offense reports listed in CHIPS. Of these reports, 52.66% were entered in CHIPS in less than or equal to 1 day. 88.49% were entered in less than or equal to 3 days, and 98.85% were entered in less than or equal to 7 days.*

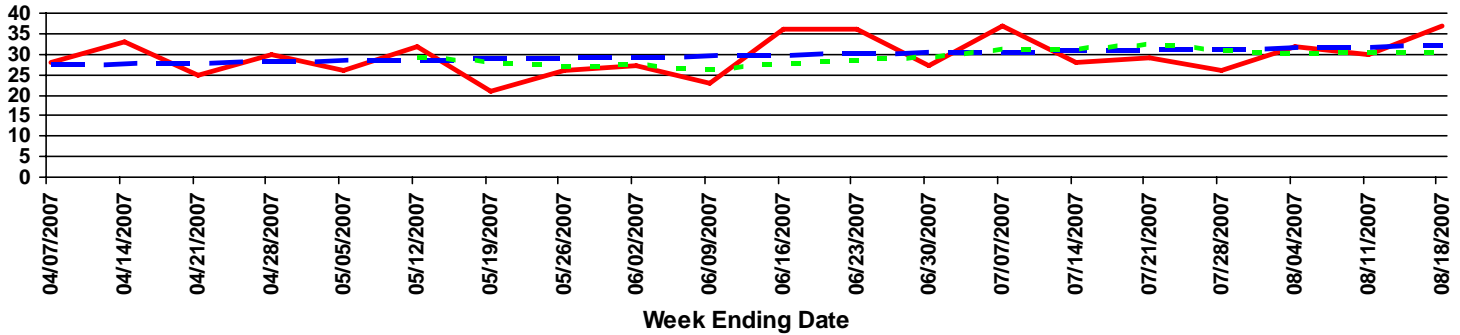
*In the current year to date, there have been a total of 22,431 offenses listed in CHIPS. Of these reports, 78.41% were entered in CHIPS in less than or equal to 3 days. 93.20% were entered in less than or equal to 5 days, and 97.86% were entered in less than or equal to 7 days.*

*For the current year to date, There was an average of 2.22 days between call received and report entry date. The minimum number of days was 0 and the maximum number of days was 86. This means that 68% of the reports were entered within 0.00 days and 5.13 days. In addition, 95% of the reports were entered between 0.00 and 8.04 days.*

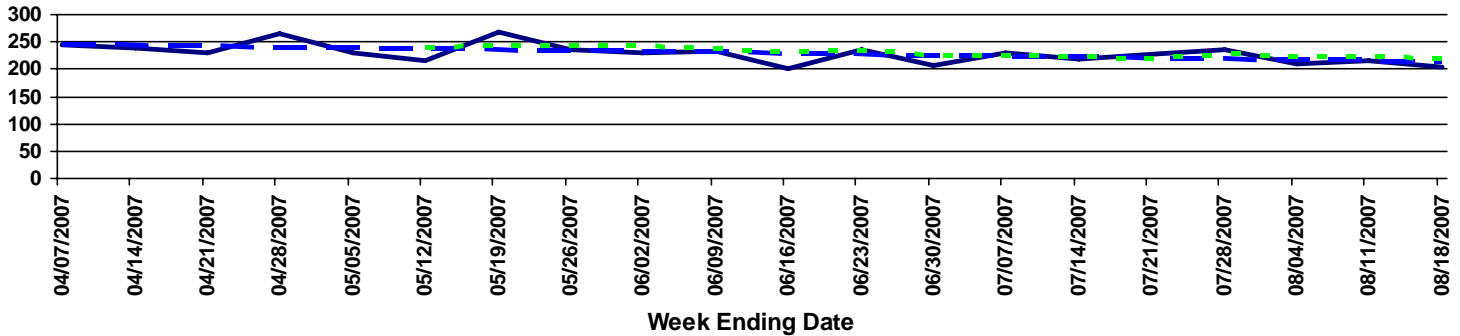
*For the last year to date, There was an average of 3.29 days between call received and report entry date. The minimum number of days was 0 and the maximum number of days was 326. This means that 68% of the reports were entered within 0.00 days and 10.73 days. In addition, 95% of the reports were entered between 0.00 and 18.18 days.*

### Current Weekly Trends

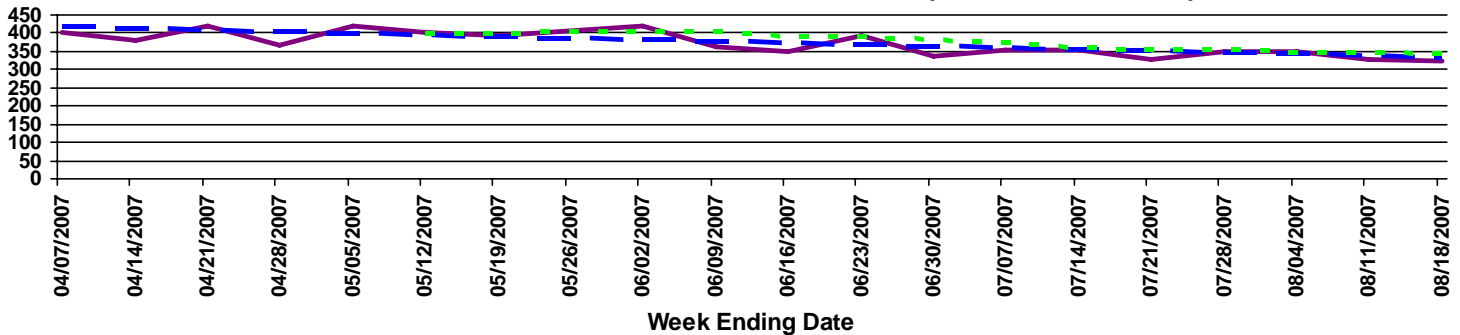
**PART 1 - WEEKLY PERSON CRIME TRENDS (PAST 20 WEEKS)**



**PART 1 - WEEKLY PROPERTY CRIME TRENDS (PAST 20 WEEKS)**



**PART II - WEEKLY PART II CRIME TRENDS (PAST 20 WEEKS)**



Crime Counts      —      Linear Trend      - - -      6 Week Moving Average      - - -

**Top 25% Part 1 Person Crime Beats Current Year to Date**

TOTAL PART 1 PERSON OFFENSES	BEAT	SECTOR
322	20	GATEWAY
262	30	GATEWAY

**Top 25% Part 1 Property Crime Beats Current Year to Date**

TOTAL PART 1 PROPERTY OFFENSES	BEAT	SECTOR
2267	50	FOOTHILLS
1980	40	FOOTHILLS

**Top 25% Part II Crime Beats Current Year to Date**

TOTAL PART II OFFENSES	BEAT	SECTOR
3567	20	GATEWAY
2893	30	GATEWAY

**Top 5% Part 1 Person Crime Grids Current Year to Date**

TOTAL PART 1 PERSON OFFENSES	GRID	SECTOR
33	CB13	GATEWAY
25	BJ15	GATEWAY
24	CB14	GATEWAY
21	CA14	GATEWAY
21	CB15	GATEWAY
21	CC18	GATEWAY
20	CD18	GATEWAY
19	CC15	GATEWAY
19	XX99	DISTRICT MISSING
18	CA13	GATEWAY
18	CC14	GATEWAY

**Top 5% Part 1 Property Crime Grids Current Year to Date**

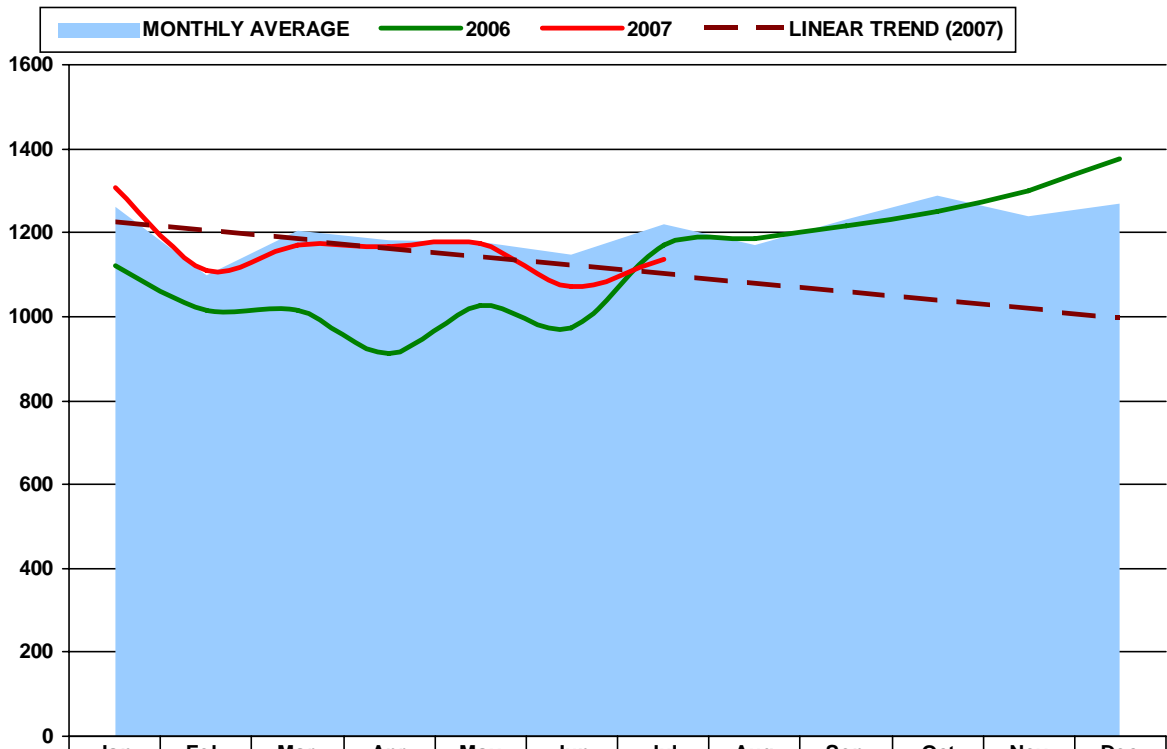
TOTAL PART 1 PROPERTY OFFENSES	GRID	SECTOR
444	DH10	FOOTHILLS
227	CE15	FOOTHILLS
154	BJ15	GATEWAY
149	CC18	GATEWAY
130	CA14	GATEWAY
125	CE17	FOOTHILLS
119	CA18	GATEWAY
115	CB12	GATEWAY
112	DH16	FOOTHILLS
110	CB18	GATEWAY
110	CC15	GATEWAY
107	BJ14	GATEWAY
107	CB13	GATEWAY
102	CD18	GATEWAY

**Top 5% Part II Crime Grids Current Year to Date**

TOTAL PART II OFFENSES	GRID	SECTOR
495	CC15	GATEWAY
300	BJ15	GATEWAY
281	CC18	GATEWAY
238	CA13	GATEWAY
201	CB14	GATEWAY
199	CC13	GATEWAY
193	CD18	GATEWAY
192	CA14	GATEWAY
177	CC14	GATEWAY
176	CF14	FOOTHILLS
171	CC12	GATEWAY
167	CB13	GATEWAY

158	CB15	GATEWAY
151	CB12	GATEWAY
150	DH10	FOOTHILLS
150	XX99	DISTRICT MISSING
149	BJ14	GATEWAY
143	CD13	GATEWAY
143	CD14	GATEWAY
142	CE17	FOOTHILLS
140	CD15	GATEWAY
140	CJ18	FOOTHILLS

### ALL PART 1 CRIMES BY MONTH

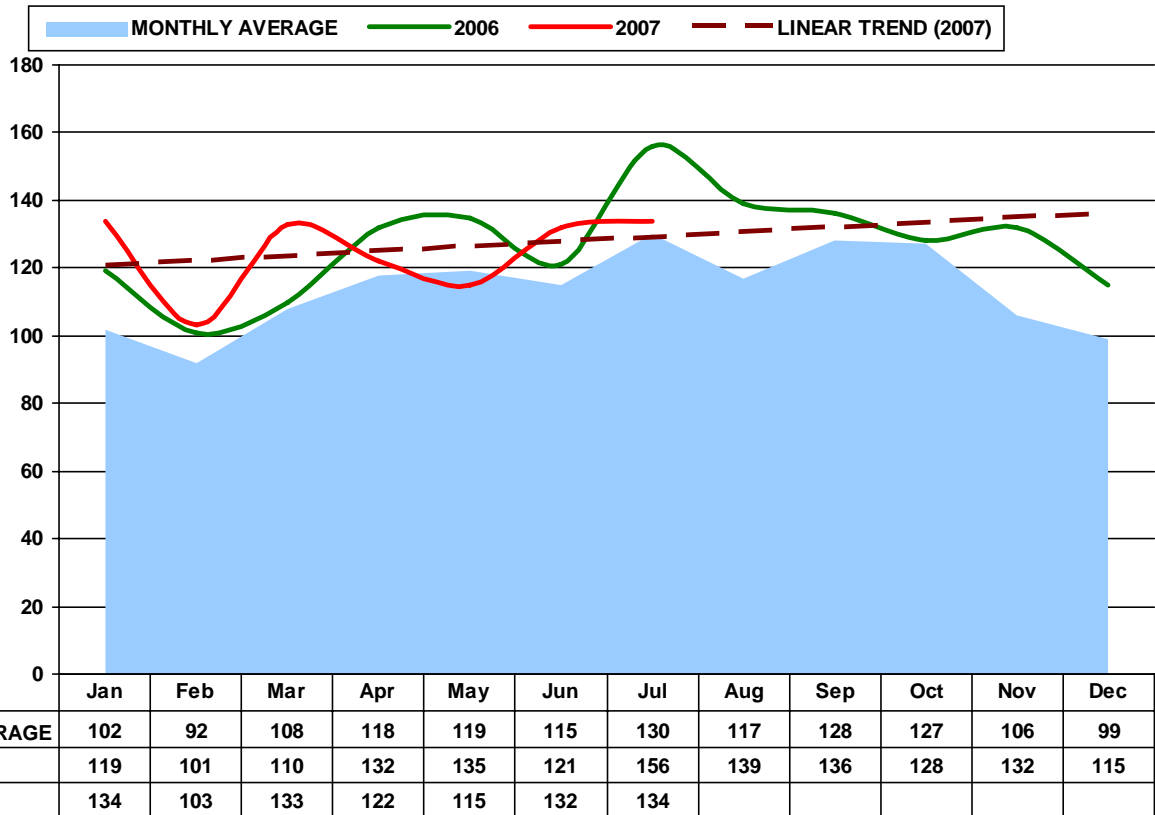


	Jan	Feb	Mar	Apr	May	Jun	Jul	Aug	Sep	Oct	Nov	Dec
<b>MONTHLY AVERAGE</b>	1262	1099	1203	1181	1178	1148	1221	1171	1231	1289	1239	1268
<b>2006</b>	1123	1016	1016	913	1028	973	1169	1186	1216	1249	1299	1374
<b>2007</b>	1307	1109	1172	1167	1176	1072	1135					

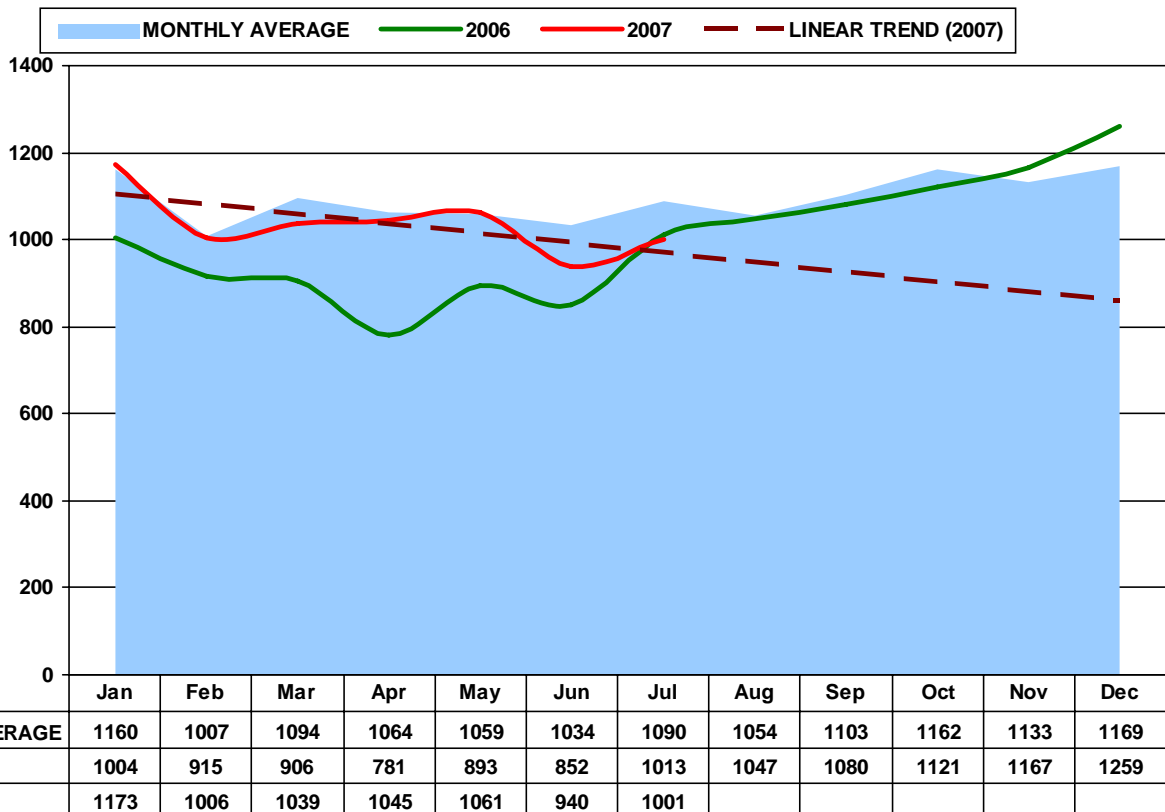
# GLENDALE POLICE DEPARTMENT - ARIZONA

## Overall UCR Part 1 Crime Categories by Month

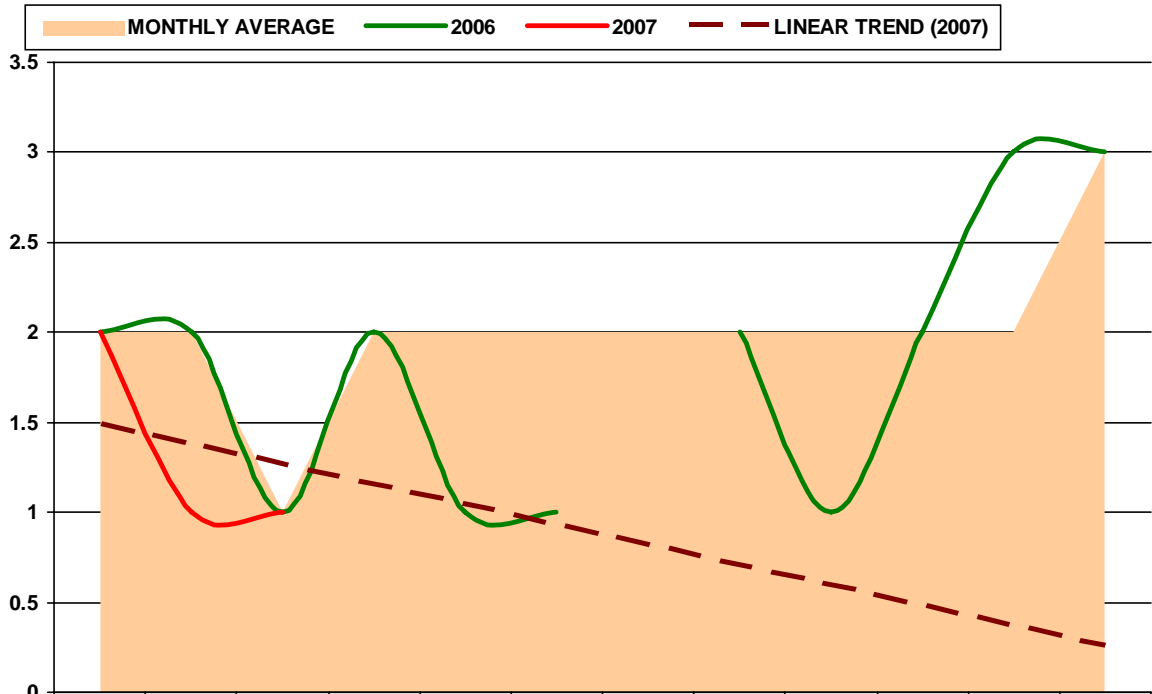
### ALL PART 1 TOTAL VIOLENT CRIMES BY MONTH



### ALL PART 1 PROPERTY CRIMES BY MONTH

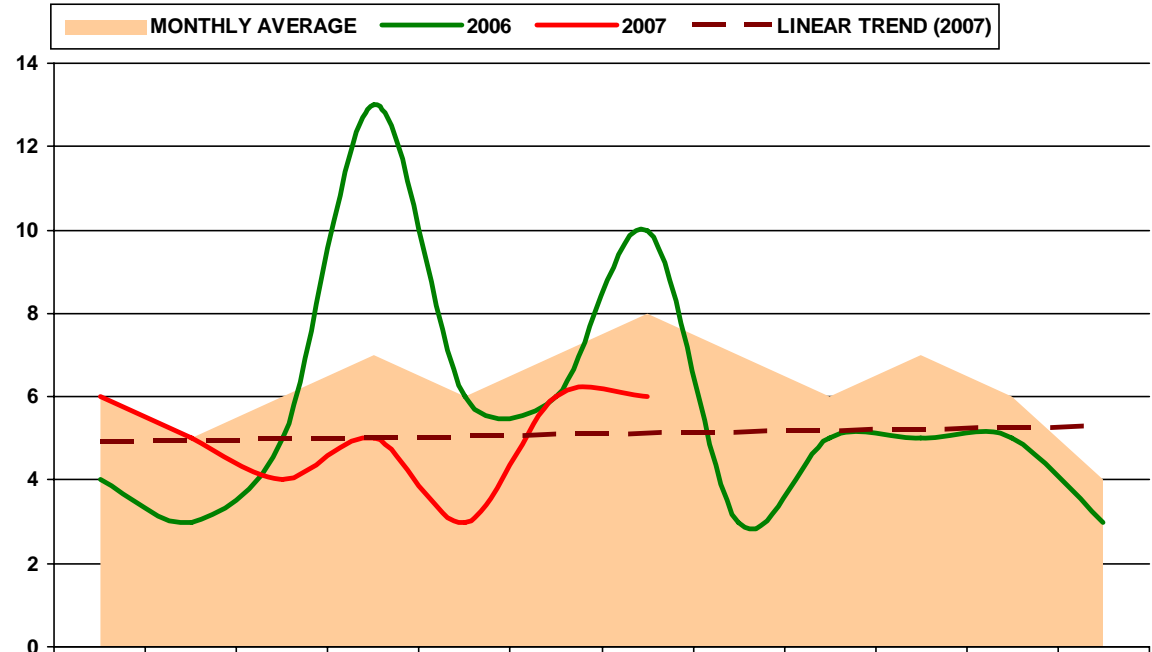


### ALL HOMICIDES BY MONTH



	Jan	Feb	Mar	Apr	May	Jun	Jul	Aug	Sep	Oct	Nov	Dec
MONTHLY AVERAGE	2	2	1	2	2	2	2	2	2	2	2	3
2006	2	2	1	2	1	1		2	1	2	3	3
2007	2	1	1		1		1					

### ALL RAPES BY MONTH

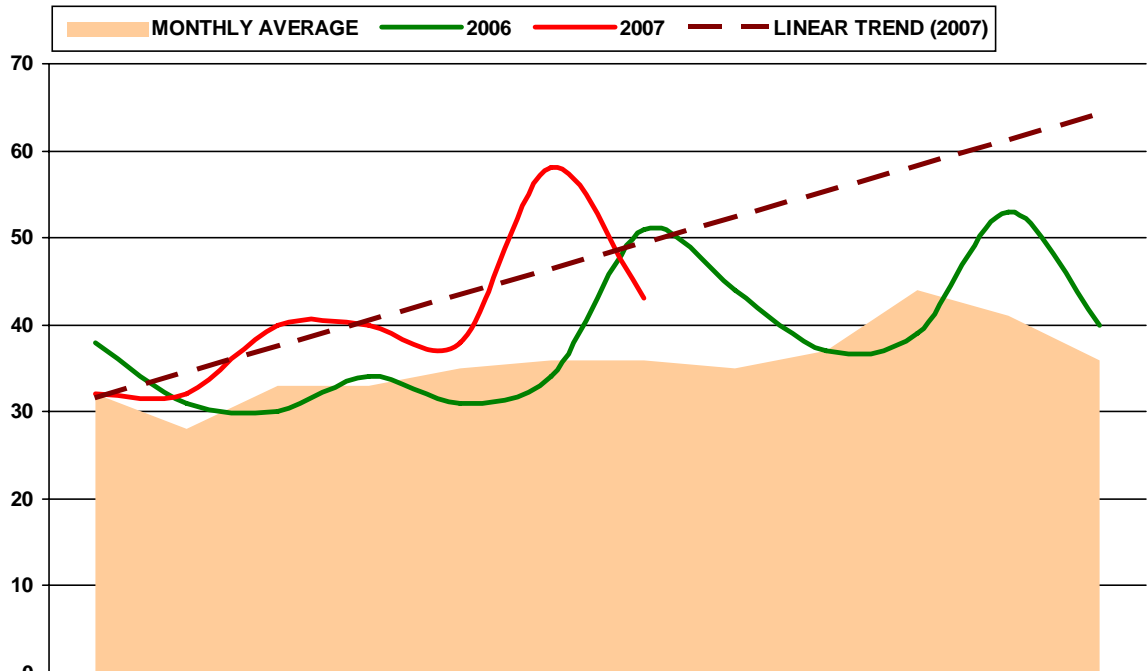


	Jan	Feb	Mar	Apr	May	Jun	Jul	Aug	Sep	Oct	Nov	Dec
MONTHLY AVERAGE	6	5	6	7	6	7	8	7	6	7	6	4
2006	4	3	5	13	6	6	10	3	5	5	5	3
2007	6	5	4	5	3	6	6					

# GLENDALE POLICE DEPARTMENT - ARIZONA

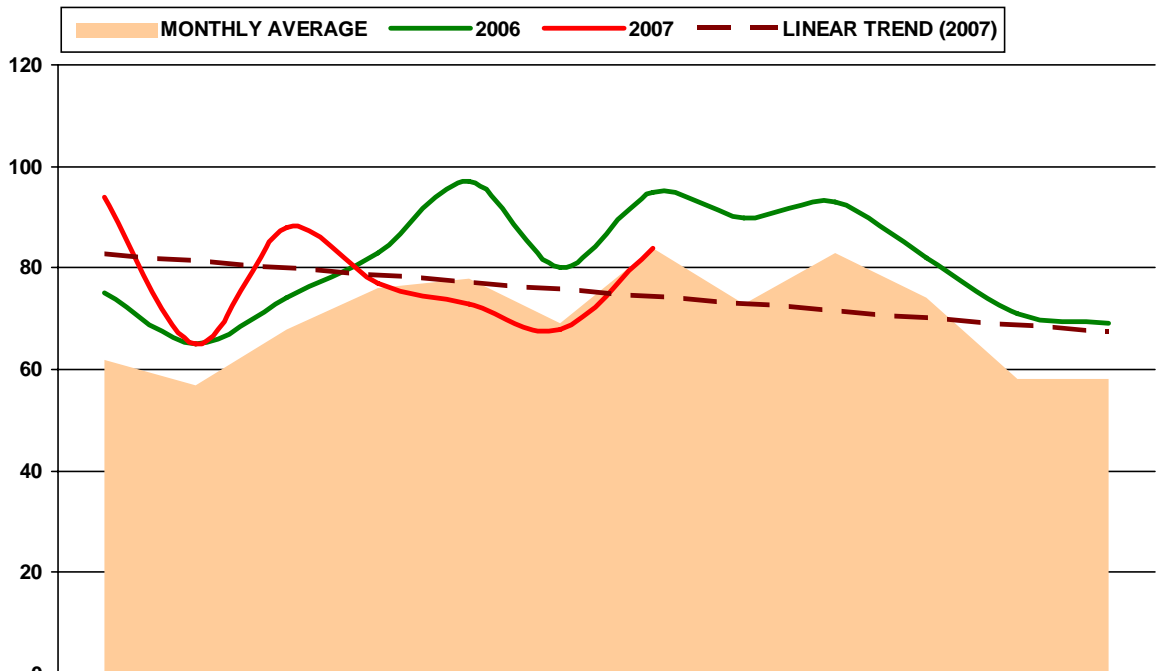
## UCR Individual Part 1 Violent Crimes by Month

### ALL ROBBERIES BY MONTH



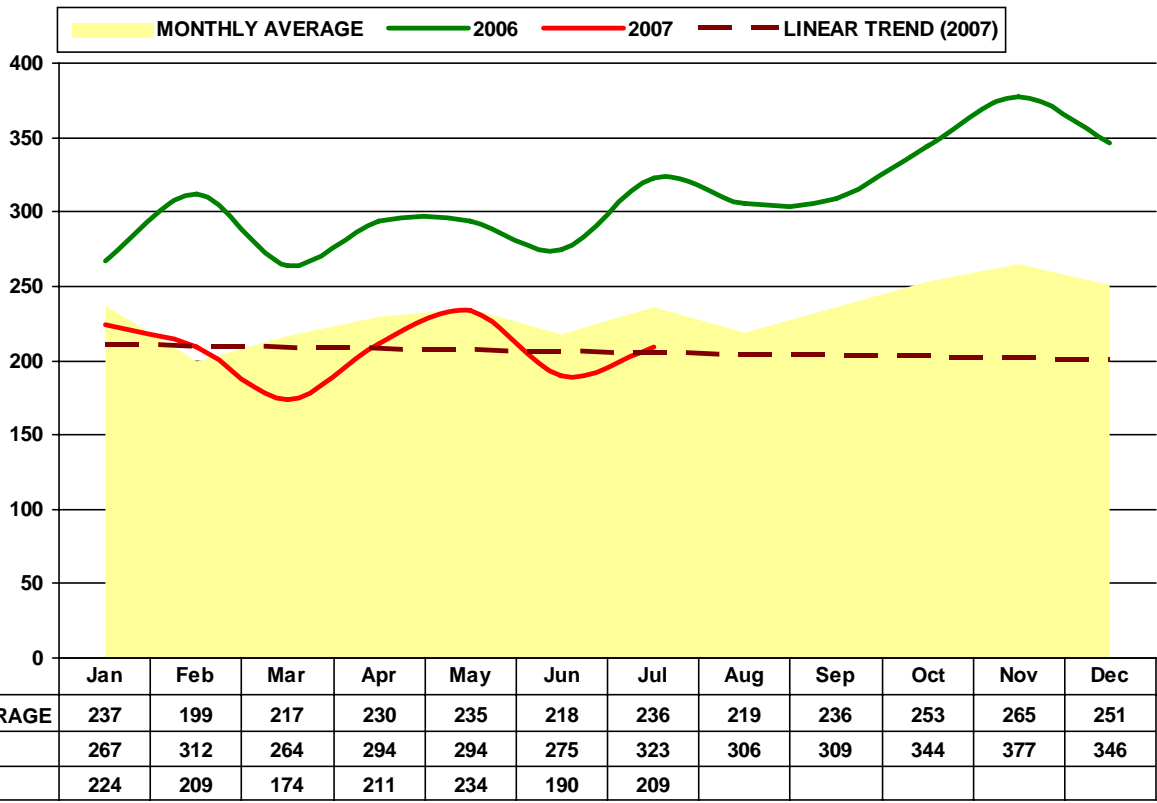
	Jan	Feb	Mar	Apr	May	Jun	Jul	Aug	Sep	Oct	Nov	Dec
<b>MONTHLY AVERAGE</b>	32	28	33	33	35	36	36	35	37	44	41	36
<b>2006</b>	38	31	30	34	31	34	51	44	37	39	53	40
<b>2007</b>	32	32	40	40	38	58	43					

### ALL AGGRAVATED ASSAULTS BY MONTH

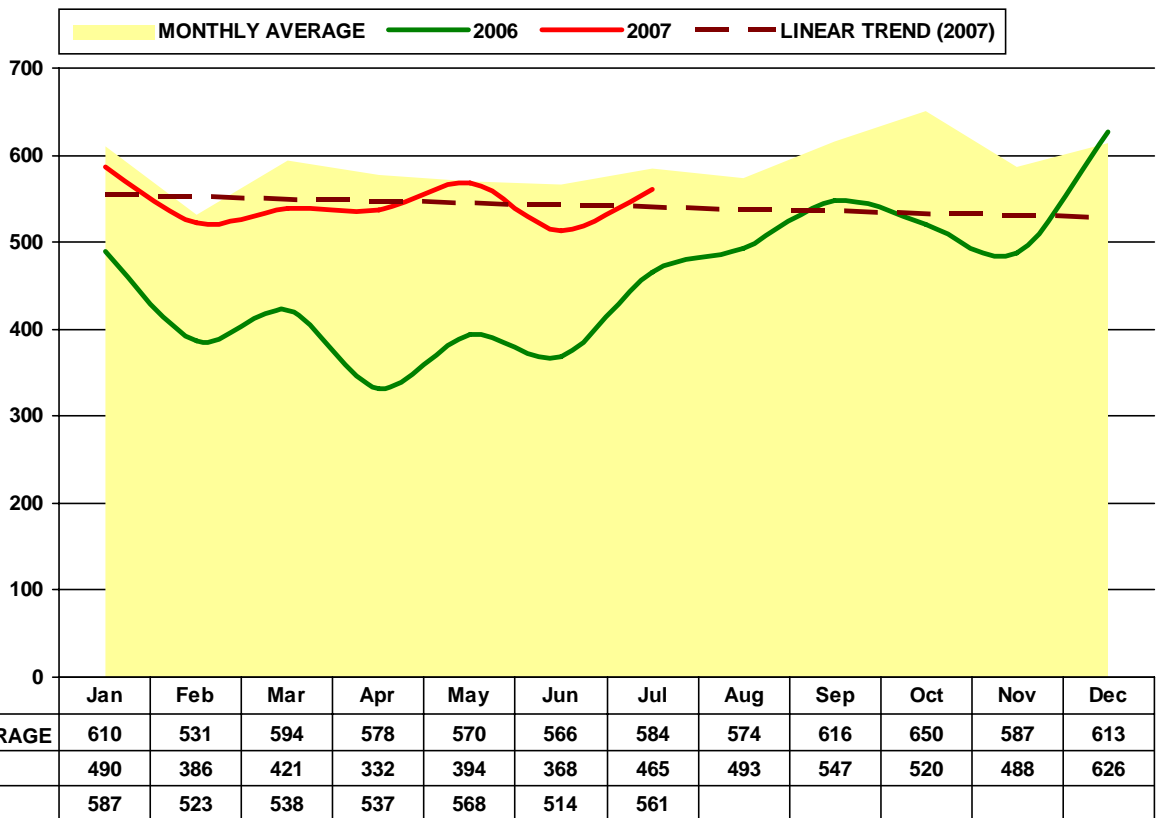


	Jan	Feb	Mar	Apr	May	Jun	Jul	Aug	Sep	Oct	Nov	Dec
<b>MONTHLY AVERAGE</b>	62	57	68	76	78	69	84	73	83	74	58	58
<b>2006</b>	75	65	74	83	97	80	95	90	93	82	71	69
<b>2007</b>	94	65	88	77	73	68	84					

### ALL BURGLARIES BY MONTH



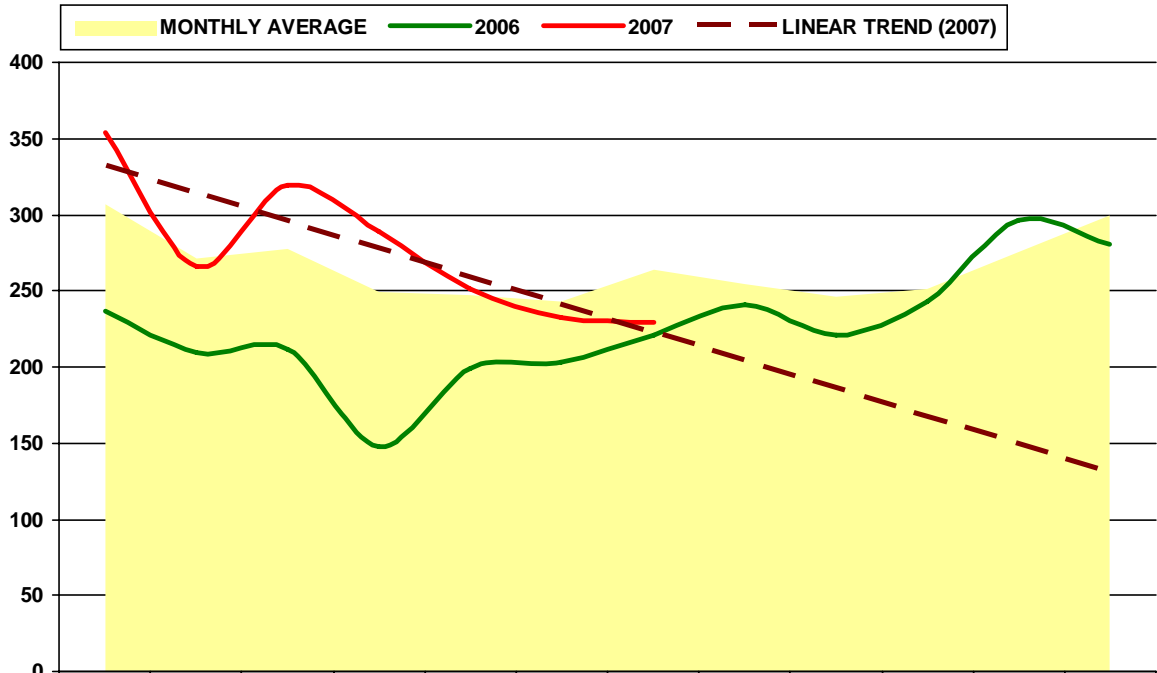
### ALL THEFTS BY MONTH



# GLENDALE POLICE DEPARTMENT - ARIZONA

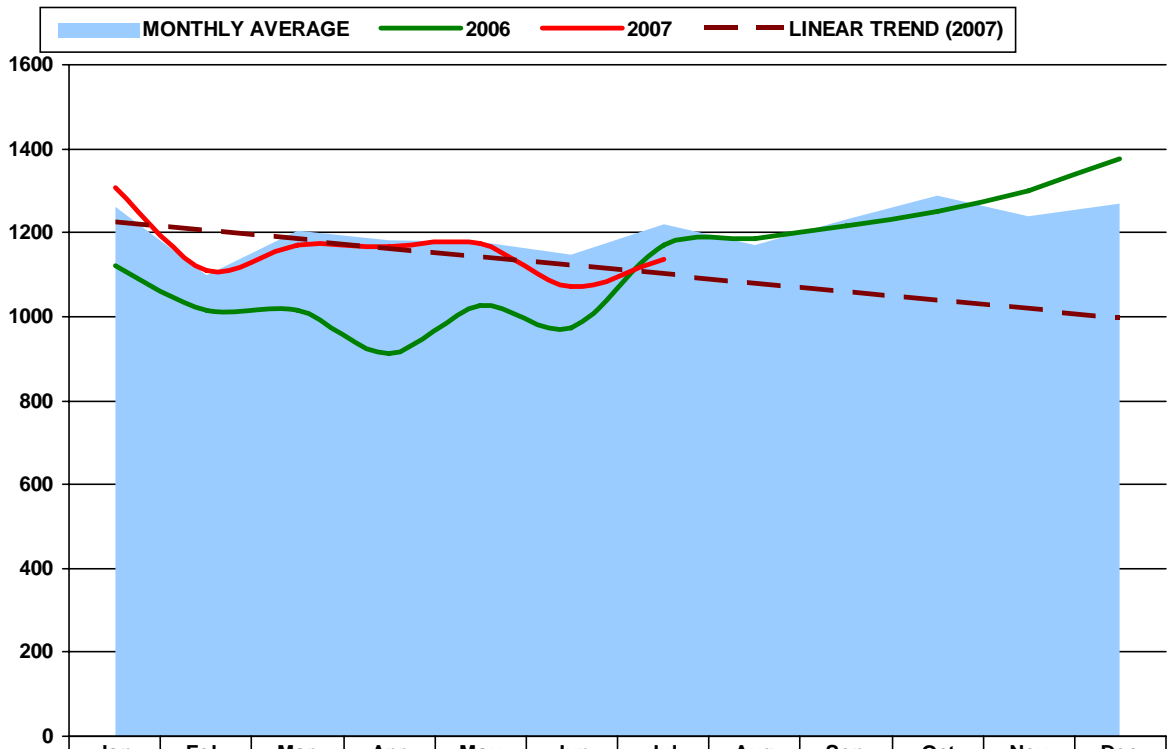
## UCR Part 1 Individual Property Crimes by Month

**ALL AUTO THEFTS BY MONTH**



	Jan	Feb	Mar	Apr	May	Jun	Jul	Aug	Sep	Oct	Nov	Dec
<b>MONTHLY AVERAGE</b>	307	271	278	249	247	243	264	254	246	251	275	299
<b>2006</b>	237	209	211	148	199	203	221	241	221	243	296	281
<b>2007</b>	354	266	319	289	251	232	229					

### ALL PART 1 CRIMES BY MONTH

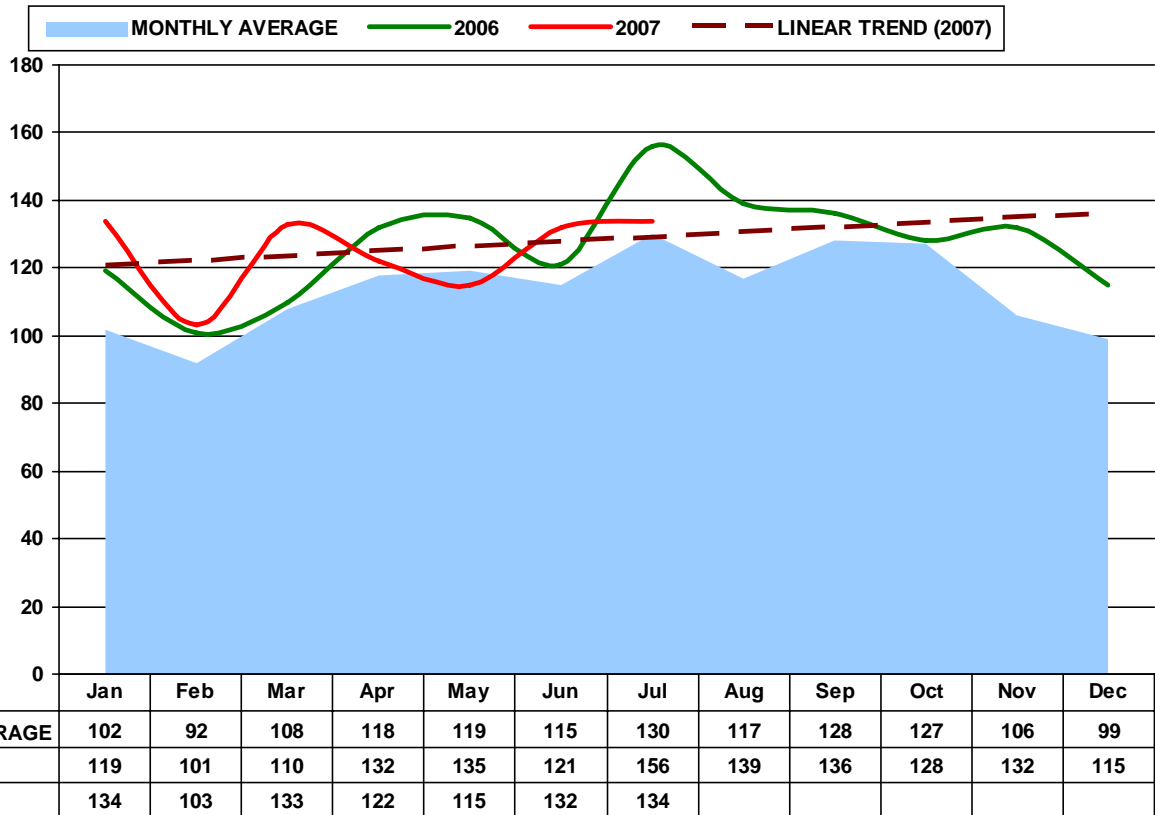


	Jan	Feb	Mar	Apr	May	Jun	Jul	Aug	Sep	Oct	Nov	Dec
<b>MONTHLY AVERAGE</b>	1262	1099	1203	1181	1178	1148	1221	1171	1231	1289	1239	1268
<b>2006</b>	1123	1016	1016	913	1028	973	1169	1186	1216	1249	1299	1374
<b>2007</b>	1307	1109	1172	1167	1176	1072	1135					

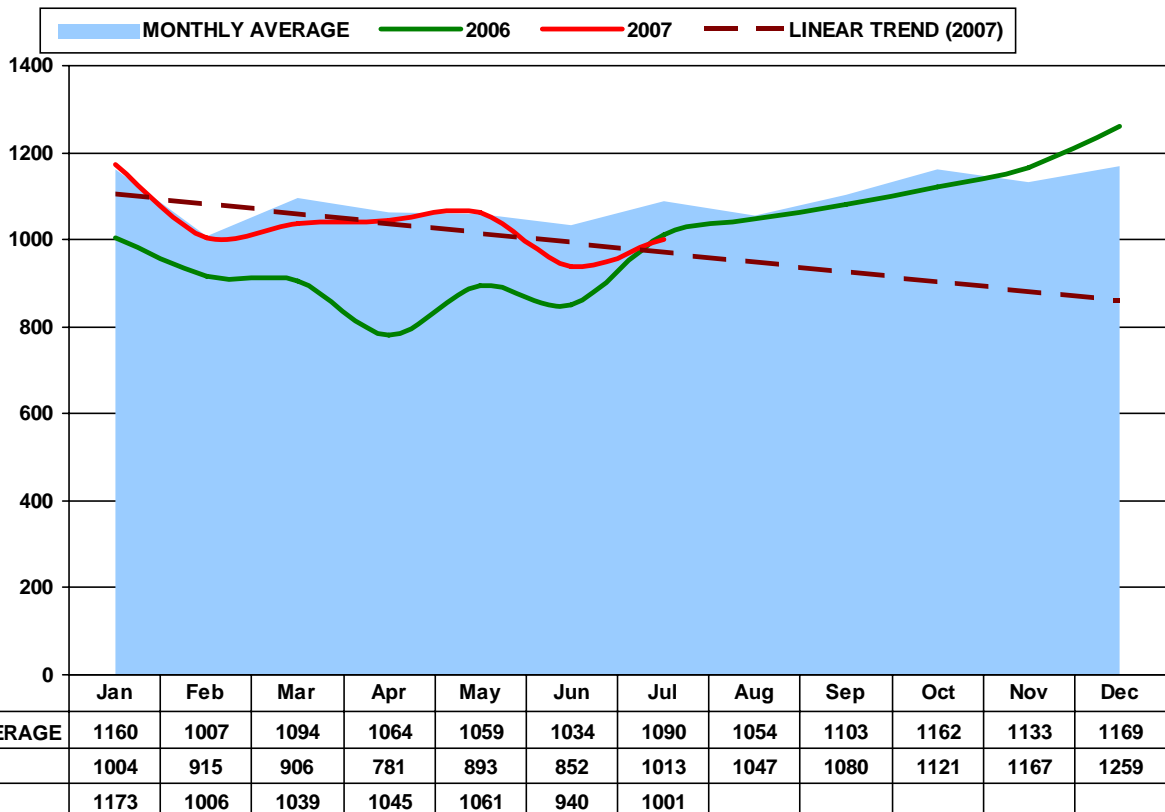
# GLENDALE POLICE DEPARTMENT - ARIZONA

## Overall UCR Part 1 Crime Categories by Month

### ALL PART 1 TOTAL VIOLENT CRIMES BY MONTH



### ALL PART 1 PROPERTY CRIMES BY MONTH

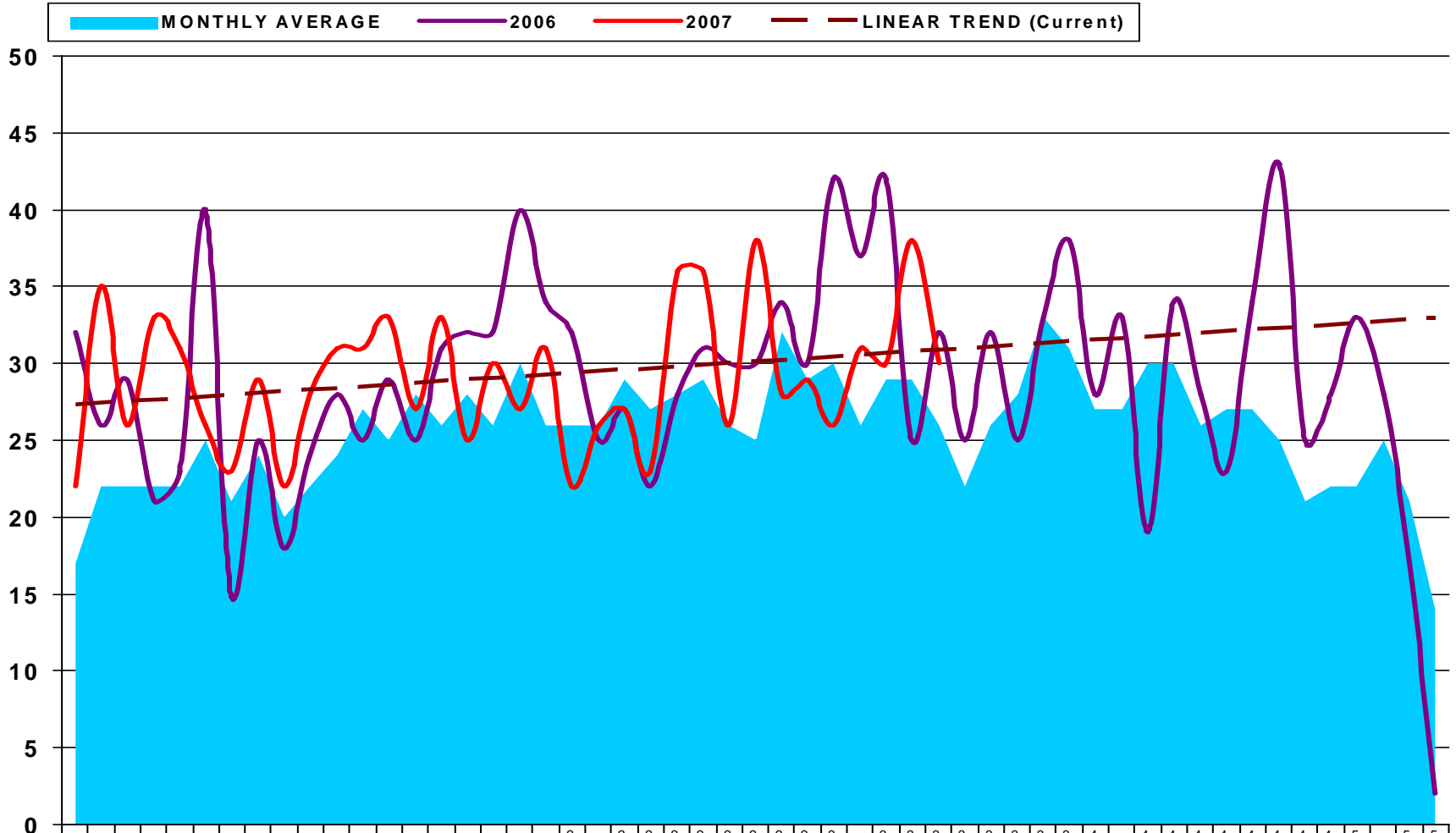




# GLENDALE POLICE DEPARTMENT - ARIZONA

## Overall UCR Part 1 Crime Categories by WEEK

### ALL PART 1 VIOLENT CRIMES BY WEEK

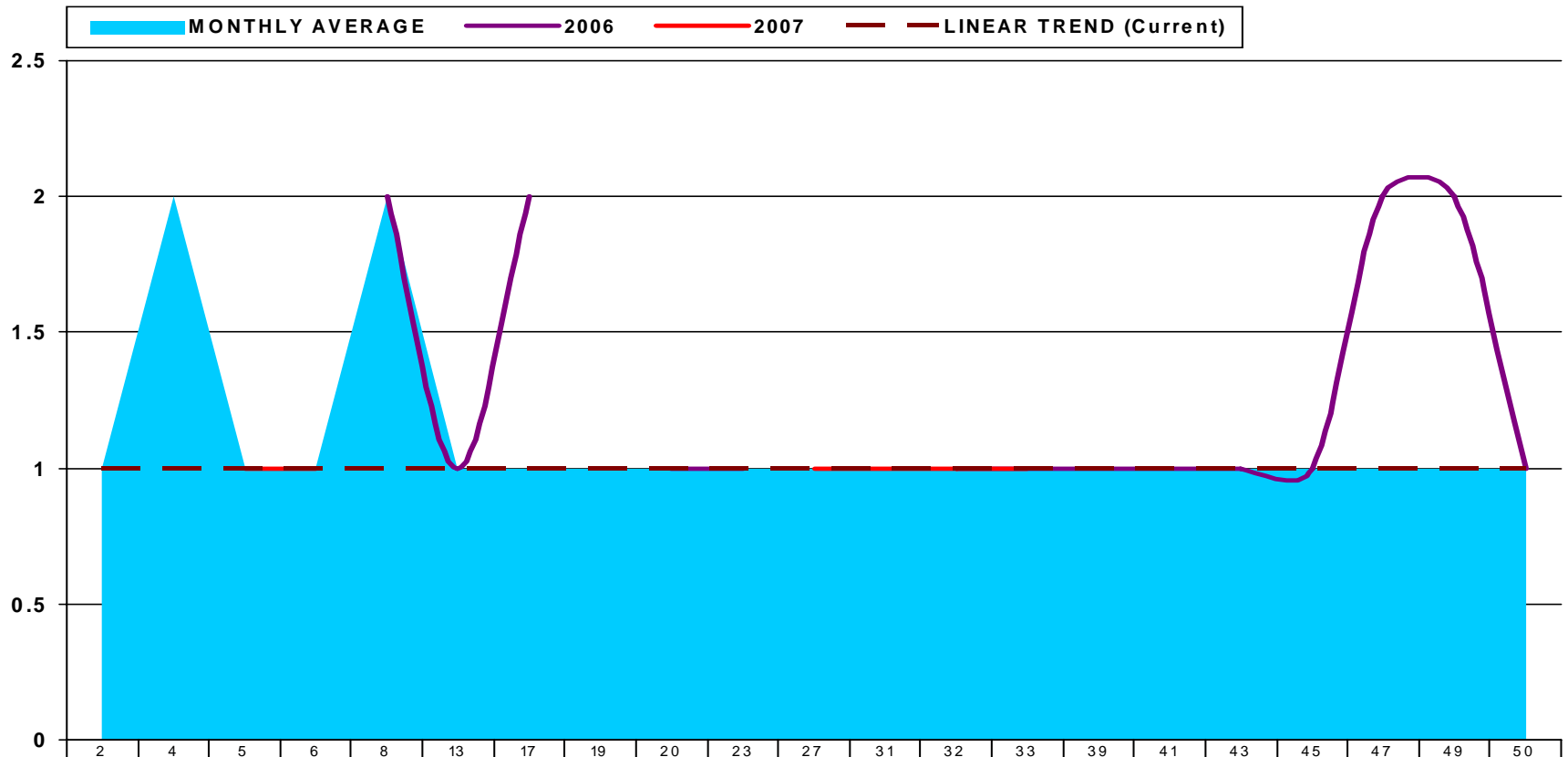


	1	2	3	4	5	6	7	8	9	10	11	12	13	14	15	16	17	18	19	20	21	22	23	24	25	26	27	28	29	30	31	32	33	34	35	36	37	38	39	40	41	42	43	44	45	46	47	48	49	50	51	52	53	
MONTHLY AVERAGE	17	22	22	22	22	25	21	24	20	22	24	27	25	28	26	28	26	30	26	26	26	29	27	28	29	26	25	32	29	30	26	29	29	26	22	26	28	33	31	27	27	30	30	26	27	27	25	21	22	22	25	21	14	
2007	22	35	26	33	31	26	23	29	22	28	31	31	33	27	33	25	30	27	31	22	26	27	23	36	36	26	38	28	29	26	31	30	38	30																				
2006	32	26	29	21	23	40	15	25	18	24	28	25	29	25	31	32	32	40	34	32	25	27	22	28	31	30	30	34	30	42	37	42	25	32	25	32	25	33	38	28	33	19	34	28	23	34	43	25	28	33	28	17	2	

# GLENDALE POLICE DEPARTMENT - ARIZONA

## UCR Part 1 Individual Violent Crime Categories by WEEK

### ALL MURDERS BY WEEK

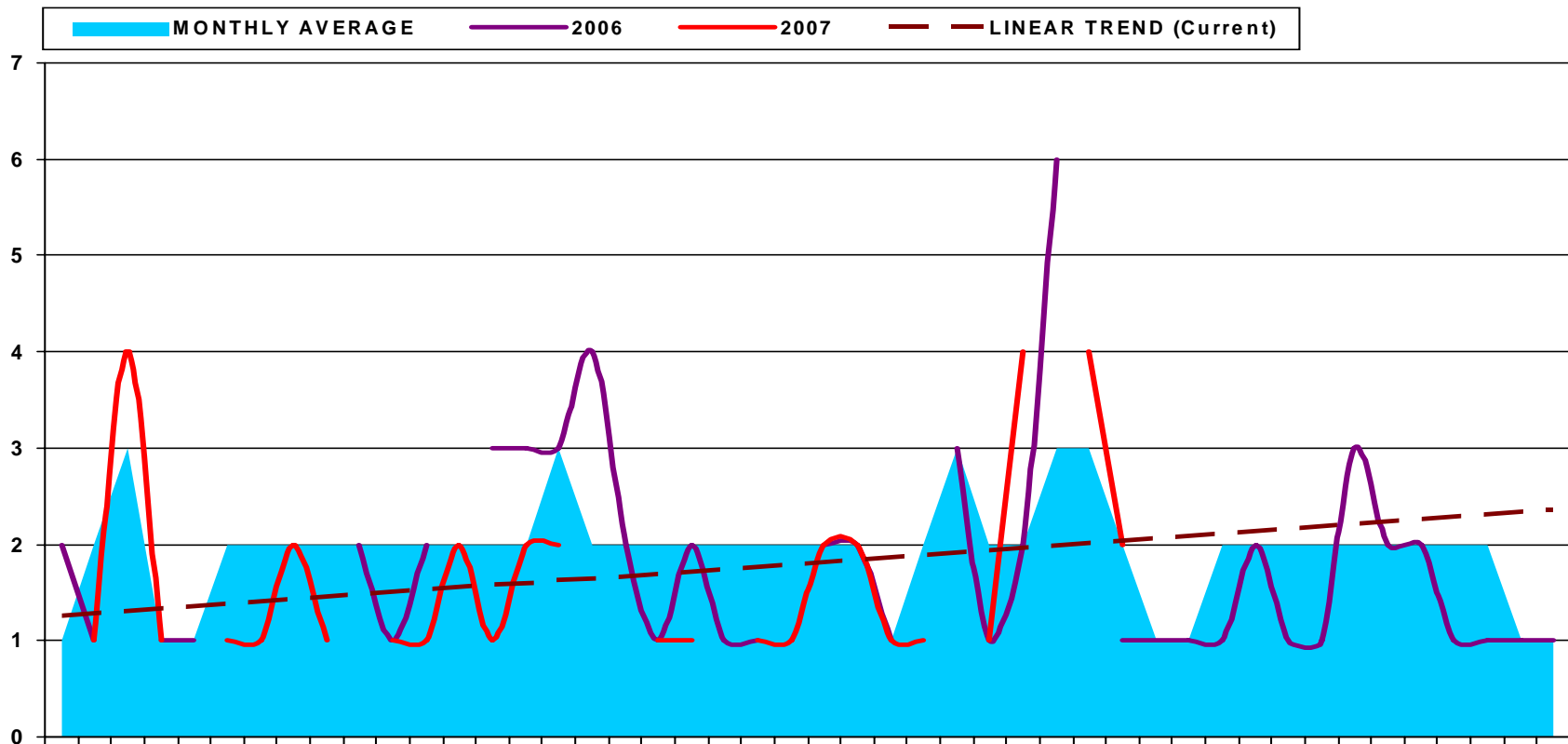


	2	4	5	6	8	13	17	19	20	23	27	31	32	33	39	41	43	45	47	49	50	
MONTHLY AVERAGE	1	2	1	1	2	1	1	1	1	1	1	1	1	1	1	1	1	1	1	1	1	
2007	1		1	1		1		1			1	1	1	1								
2006		2			2	1	2			1	1			1	1	1	1	1	1	2	2	1

# GLENDALE POLICE DEPARTMENT - ARIZONA

## UCR Part 1 Individual Violent Crime Categories by WEEK

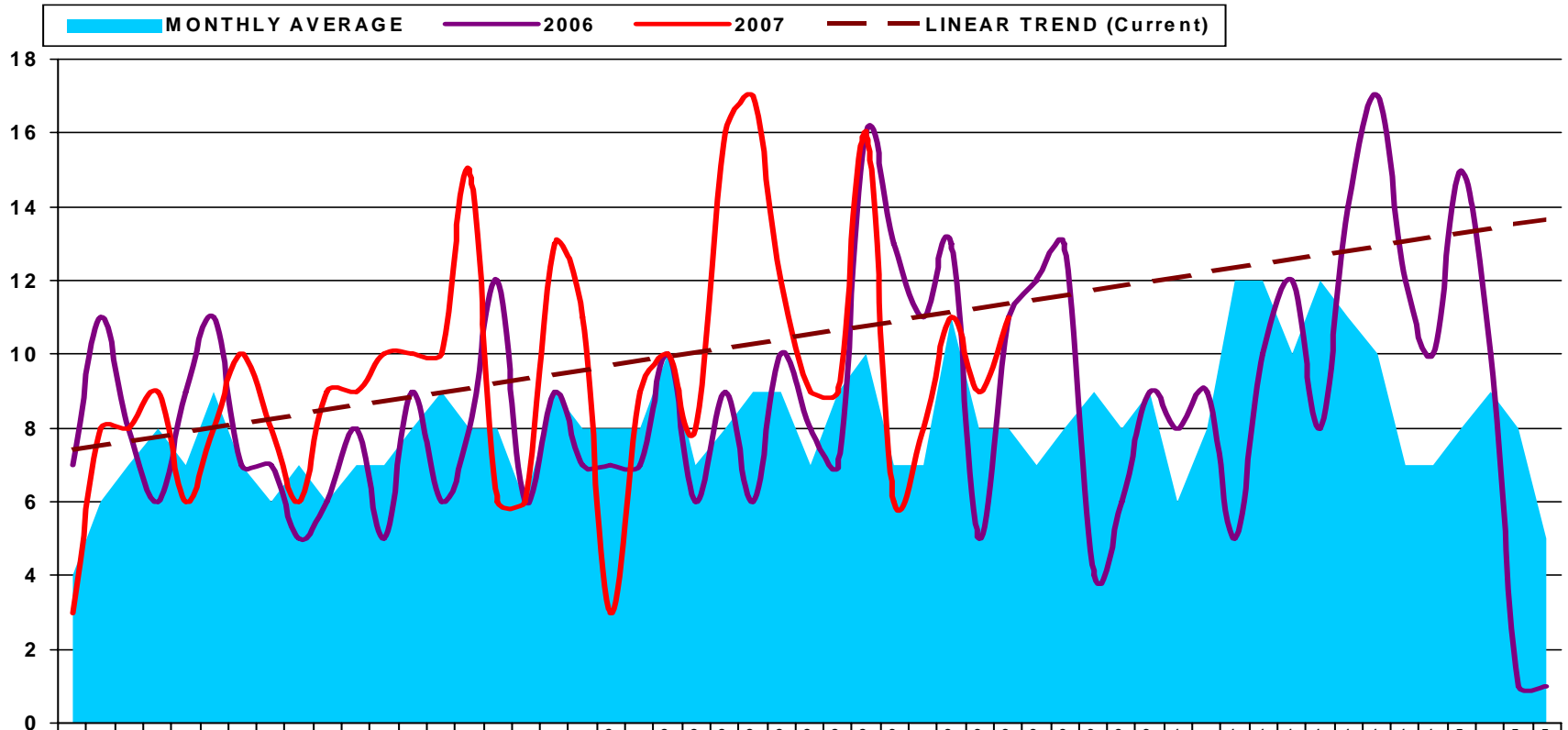
### ALL RAPES BY WEEK



	1	2	3	4	5	6	7	8	9	10	11	12	13	14	15	16	17	18	19	20	21	22	23	24	25	26	27	28	29	30	31	33	34	35	37	38	39	41	42	43	44	46	48	49	50	52		
MONTHLY AVERAGE	1	2	3	1	1	2	2	2	2	2	2	2	2	2	2	3	2	2	2	2	2	2	2	2	2	2	1	2	3	2	2	3	3	2	1	1	2	2	2	2	2	2	2	2	1	1		
2007	1	4	1	1	1	1	2	1		1	1	2	1	2	2			1	1		1	1	2	2	1	1		1	4		4	2																
2006	2	1		1	1		2			2	1	2		3	3	3	4	2	1	2	1	1		2	2	1		3	1	2	6			1	1	1	1	1	2	1	1	3	2	2	1	1	1	1

**GLENDALE POLICE DEPARTMENT - ARIZONA**  
UCR Part 1 Individual Violent Crime Categories by WEEK

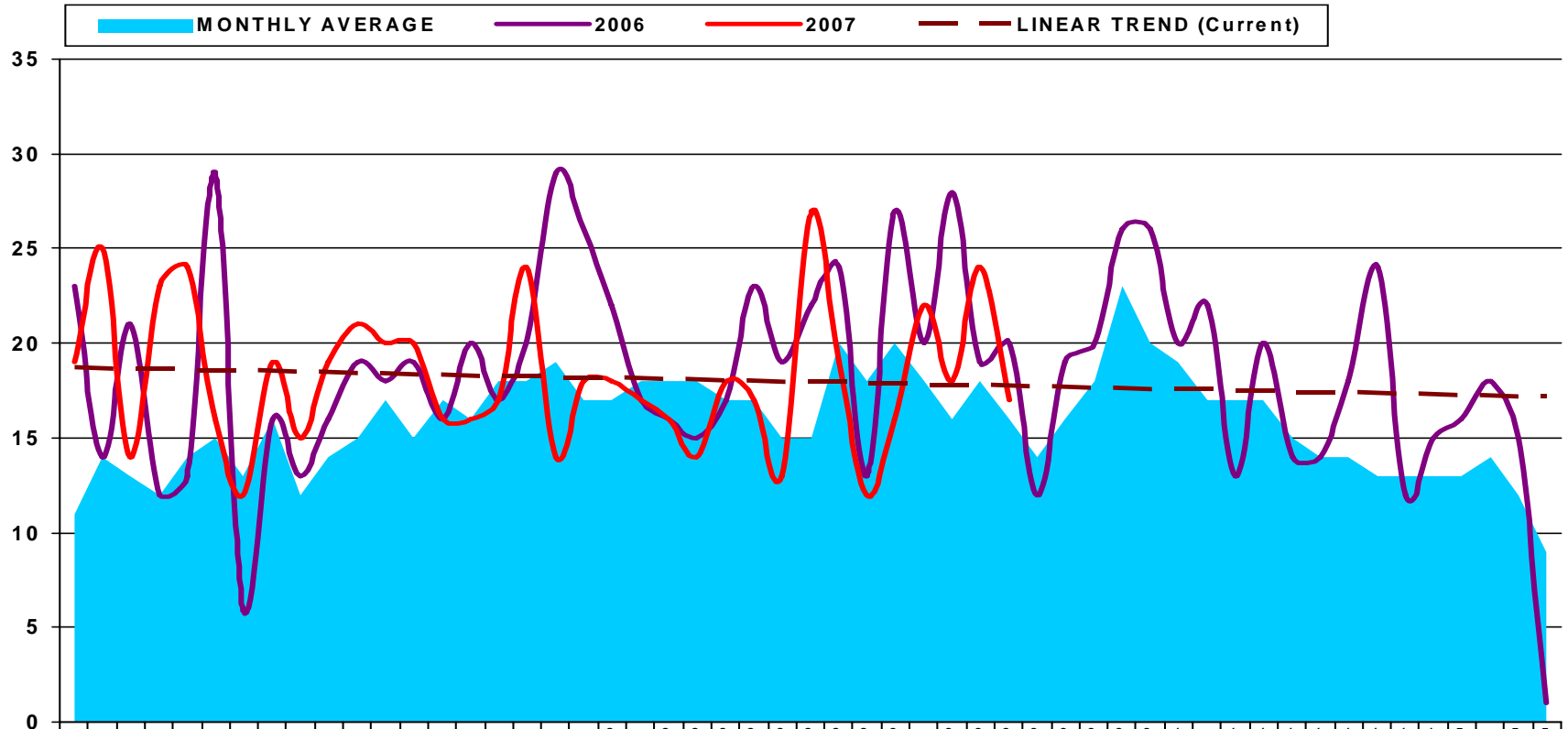
**ALL ROBBERIES BY WEEK**



	1	2	3	4	5	6	7	8	9	10	11	12	13	14	15	16	17	18	19	20	21	22	23	24	25	26	27	28	29	30	31	32	33	34	35	36	37	38	39	40	41	42	43	44	45	46	47	48	49	50	51	52	53			
MONTHLY AVERAGE	4	6	7	8	7	9	7	6	7	6	7	7	8	9	8	8	6	9	8	8	8	10	7	8	9	9	7	9	10	7	7	11	8	8	7	8	9	8	9	8	9	6	8	12	12	10	12	11	10	7	7	8	9	8	5	
2007	3	8	8	9	6	8	10	8	6	9	9	10	10	10	15	6	6	13	11	3	9	10	8	16	17	12	9	9	16	6	8	11	9	11																						
2006	7	11	8	6	9	11	7	7	5	6	8	5	9	6	8	12	6	9	7	7	7	10	6	9	6	10	8	7	16	13	11	13	5	11	12	13	4	6	9	8	9	5	10	12	8	14	17	12	10	15	10	1	1			

**GLENDALE POLICE DEPARTMENT - ARIZONA**  
UCR Part 1 Individual Violent Crime Categories by WEEK

**ALL AGGRAVATED ASSAULTS BY WEEK**

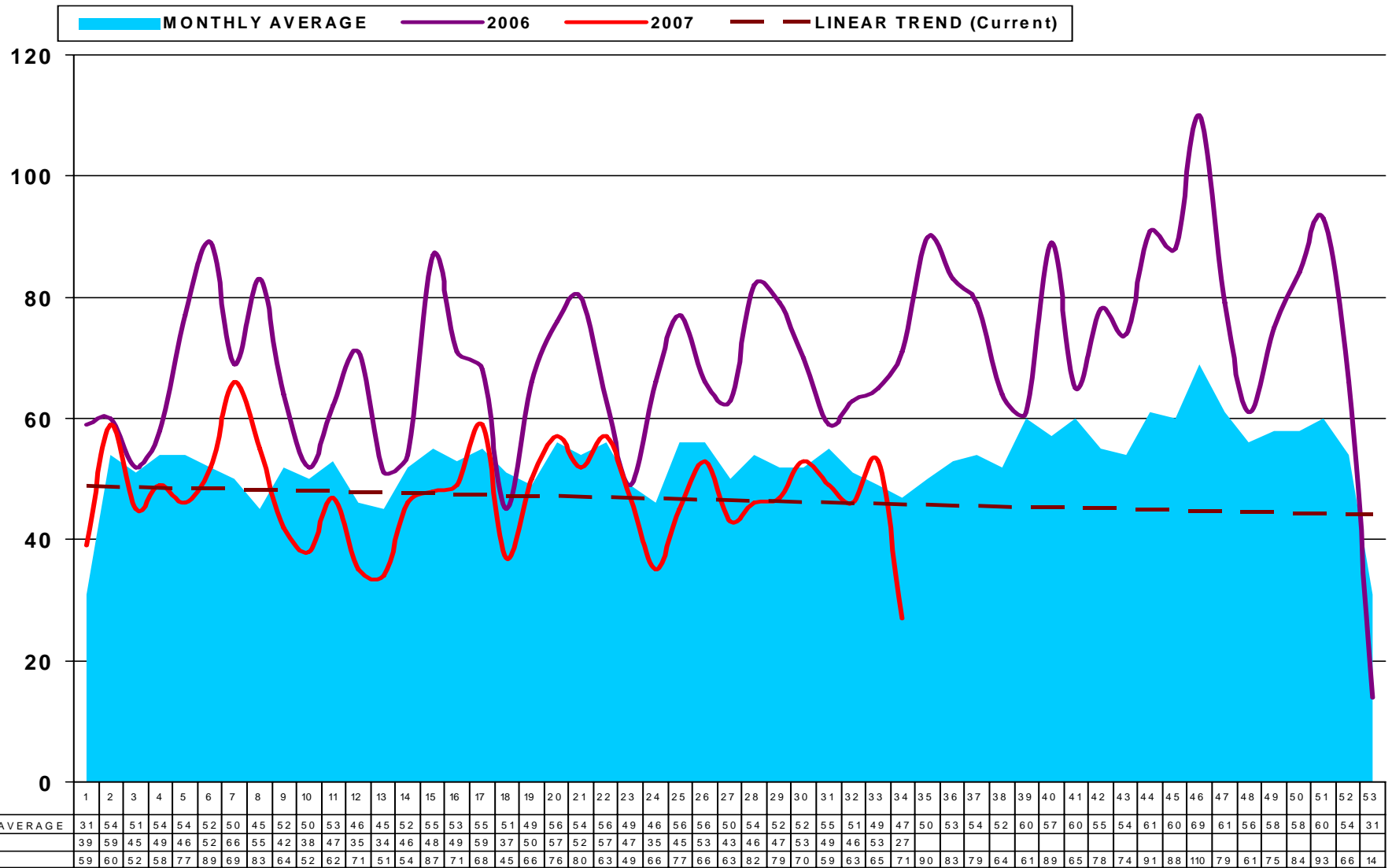


	1	2	3	4	5	6	7	8	9	10	11	12	13	14	15	16	17	18	19	20	21	22	23	24	25	26	27	28	29	30	31	32	33	34	35	36	37	38	39	40	41	42	43	44	45	46	47	48	49	50	51	52	53					
MONTHLY AVERAGE	11	14	13	12	14	15	13	16	12	14	15	17	15	17	16	16	17	18	18	17	17	18	18	18	17	17	15	15	20	18	20	18	16	18	18	16	14	16	18	18	23	20	19	17	17	17	15	14	14	14	13	13	13	13	14	12	9	
2007	19	25	14	23	24	16	12	19	15	19	21	20	20	16	16	17	24	14	18	18	17	16	14	18	17	13	27	19	12	16	22	18	24	17																								
2006	23	14	21	12	13	29	6	16	13	16	19	18	19	16	20	17	20	29	26	22	17	16	15	17	23	19	22	24	13	27	20	28	19	20	12	19	20	26	26	20	22	13	20	14	14	18	24	12	15	16	18	15	1					



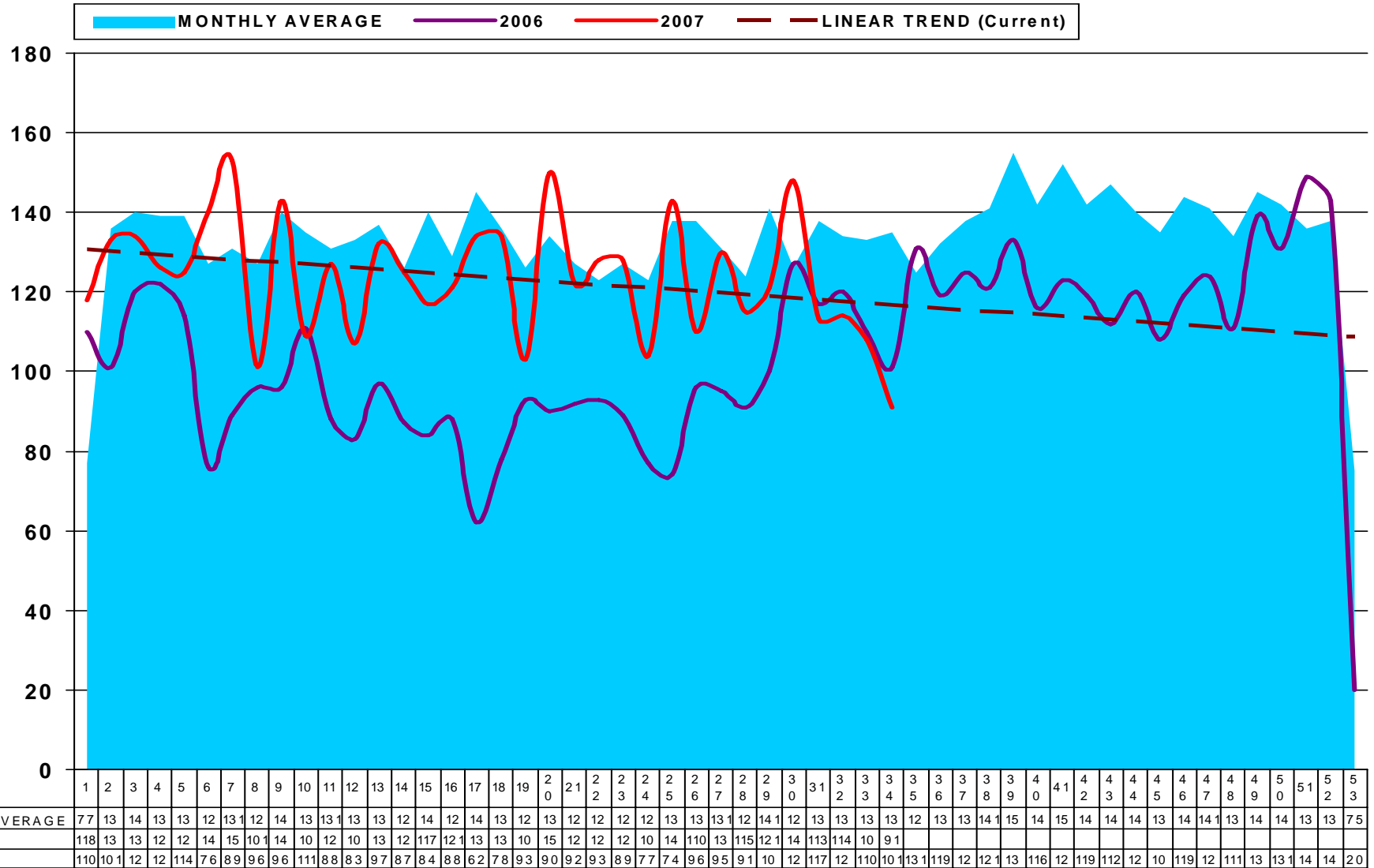
**GLENDALE POLICE DEPARTMENT - ARIZONA**  
UCR Part 1 Individual Property Crime Categories by WEEK

**ALL BURGLARIES BY WEEK**



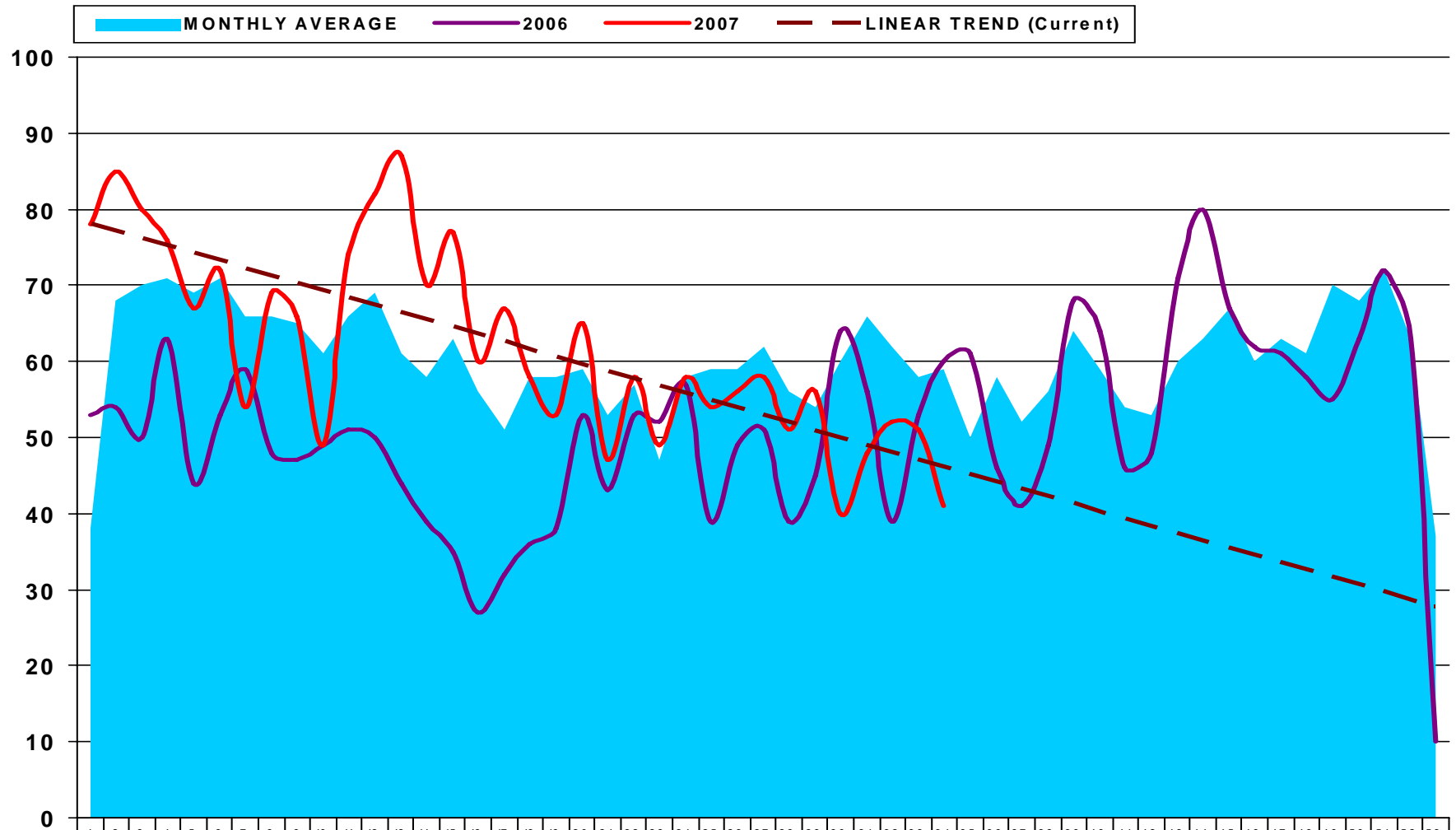
**GLENDALE POLICE DEPARTMENT - ARIZONA**  
UCR Part 1 Individual Property Crime Categories by WEEK

**ALL THEFTS BY WEEK**



**GLENDALE POLICE DEPARTMENT - ARIZONA**  
UCR Part 1 Individual Property Crime Categories by WEEK

**ALL AUTO THEFTS BY WEEK**



	1	2	3	4	5	6	7	8	9	10	11	12	13	14	15	16	17	18	19	20	21	22	23	24	25	26	27	28	29	30	31	32	33	34	35	36	37	38	39	40	41	42	43	44	45	46	47	48	49	50	51	52	53		
MONTHLY AVERAGE	38	68	70	71	69	71	66	66	65	61	66	69	61	58	63	56	51	58	58	59	53	57	47	58	59	59	62	56	54	60	66	62	58	59	50	58	52	56	64	59	54	53	60	63	67	60	63	61	70	68	72	63	37		
2007	78	85	80	76	67	72	54	69	66	49	74	82	87	70	77	60	67	58	53	65	47	58	49	58	54	56	58	51	56	40	48	52	51	41																					
2006	53	54	50	63	44	53	59	48	47	49	51	50	44	39	35	27	32	36	38	53	43	53	52	57	39	49	51	39	45	64	56	39	53	60	61	46	41	49	68	64	46	48	71	80	67	62	61	58	55	63	72	63	10		

## UCR PART 1 VIOLENT CRIME BEAT THRESHOLDS

UCR Part 1 Violent Crimes (persons crimes) for the city of Glendale for the most recent week in this report totaled: 37 offenses. The average number of Part 1 Violent crimes citywide is 29.5; the minimum was 21; and the maximum was 37. This means that the most recent week was above the average for the city. In addition, 68% of the weeks had between 24.8 and 34.1 offenses. This indicates that Part 1 Violent Crimes were ABOVE 'normal range' for the city this week.

### GATEWAY PATROL DISTRICTS

UCR Part 1 Violent Crimes (persons crimes) for the Patrol District 20 for the most recent week in this report totaled: 22 offenses. The average number of Part 1 Violent crimes for District 20 is 10.7; the minimum was 3; and the maximum was 22. This means that the most recent week was above the average for this district. In addition, 68% of the weeks had between 5.9 and 15.5 offenses. This indicates that Part 1 Violent Crimes were ABOVE 'normal range' for this district, this week.

UCR Part 1 Violent Crimes (persons crimes) for the Patrol District 30 for the most recent week in this report totaled: 3 offenses. The average number of Part 1 Violent crimes for Patrol District 30 is 7.5; the minimum was 2; and the maximum was 13. This means that the most recent week was below the average for this district. In addition, 68% of the weeks had between 3.9 and 11.1 offenses. This indicates that Part 1 Violent Crimes were BELOW 'normal range' for this district, this week.

### DATA WHERE THE BEAT IS MISSING FROM CHIPS (District 99)

UCR Part 1 Violent Crimes (persons crimes) for the Patrol District 99 for the most recent week in this report totaled: 3 offenses. The average number of Part 1 Violent crimes for Patrol District 99 is 1.5; the minimum was 0; and the maximum was 7. This means that the most recent week was above the average for this district. In addition, 68% of the weeks had between . and 3. offenses. This indicates that Part 1 Violent Crimes were at or above average and within 'normal range' for this district. this week.

*Note: Incidents where the district (beat) is missing from the CHIPS data cannot be counted in the correct patrol division or sector, and therefore the totals for the individual patrol divisions/sectors will not add up to the citywide totals which include these incidents*

## UCR PART 1 VIOLENT CRIME BEAT THRESHOLDS

UCR Part 1 Violent Crimes (persons crimes) for the city of Glendale for the most recent week in this report totaled: 37 offenses. The average number of Part 1 Violent crimes citywide is 29.5; the minimum was 21; and the maximum was 37. This means that the most recent week was above the average for the city. In addition, 68% of the weeks had between 24.8 and 34.1 offenses. This indicates that Part 1 Violent Crimes were ABOVE 'normal range' for the city this week.

### FOOTHILLS BEATS

UCR Part 1 Violent Crimes (persons crimes) for the Patrol District 40 for the most recent week in this report totaled: 1 offenses. The average number of Part 1 Violent crimes for Patrol District 40 is 4.6; the minimum was 1; and the maximum was 8. This means that the most recent week was below the average for this district. In addition, 68% of the weeks had between 2.6 and 6.6 offenses. This indicates that Part 1 Violent Crimes were BELOW 'normal range' for this district, this week.

UCR Part 1 Violent Crimes (persons crimes) for the Patrol District 50 for the most recent week in this report totaled: 8 offenses. The average number of Part 1 Violent crimes for Patrol District 50 is 5.2; the minimum was 2; and the maximum was 9. This means that the most recent week was above the average for this district. In addition, 68% of the weeks had between 3. and 7.3 offenses. This indicates that Part 1 Violent Crimes were ABOVE 'normal range' for this district, this week.

### DATA WHERE THE BEAT IS MISSING FROM CHIPS (District 99)

UCR Part 1 Violent Crimes (persons crimes) for the Patrol District 99 for the most recent week in this report totaled: 3 offenses. The average number of Part 1 Violent crimes for Patrol District 99 is 1.5; the minimum was 0; and the maximum was 7. This means that the most recent week was above the average for this district. In addition, 68% of the weeks had between . and 3. offenses. This indicates that Part 1 Violent Crimes were at or above average and within 'normal range' for this district. this week.

*Note: Incidents where the district (beat) is missing from the CHIPS data cannot be counted in the correct patrol division or sector, and therefore the totals for the individual patrol divisions/sectors will not add up to the citywide totals which include these incidents. District 99 is reported for both Gateway and Foothills reports and should not be added)*

## UCR PART 1 PROPERTY CRIME BEAT THRESHOLDS

UCR Part 1 Property Crimes for the city of Glendale for the most recent week in this report totaled: 205 offenses. The average number of Part 1 Property crimes citywide is 228.8; the minimum was 200; and the maximum was 267. This means that the most recent week was below the average for the city. In addition, 68% of the weeks had between 210.9 and 246.7 offenses. This indicates that Part 1 Property Crimes were BELOW 'normal range' for the city this week.

### GATEWAY PATROL DISTRICTS

UCR Part 1 Property Crimes for the Patrol District 20 for the most recent week in this report totaled: 70 offenses. The average number of Part 1 Property crimes for District 20 is 61.6; the minimum was 34; and the maximum was 103. This means that the most recent week was above the average for this district. In addition, 68% of the weeks had between 41.6 and 81.6 offenses. This indicates that Part 1 Property Crimes were at or above average and within 'normal range' for this district. this week.

UCR Part 1 Property Crimes for the Patrol District 30 for the most recent week in this report totaled: 8 offenses. The average number of Part 1 Property crimes for Patrol District 30 is 41.3; the minimum was 5; and the maximum was 71. This means that the most recent week was below the average for this district. In addition, 68% of the weeks had between 19. and 63.6 offenses. This indicates that Part 1 Property Crimes were BELOW 'normal range' for this district, this week.

### DATA WHERE THE BEAT IS MISSING FROM CHIPS (District 99)

UCR Part 1 Property Crimes for the Patrol District 99 for the most recent week in this report totaled: 4 offenses. The average number of Part 1 Property crimes for Patrol District 99 is 2.2; the minimum was 0; and the maximum was 6. This means that the most recent week was above the average for this district. In addition, 68% of the weeks had between .6 and 3.8 offenses. This indicates that Part 1 Property Crimes were ABOVE 'normal range' for this district, this week.

*Note: Incidents where the district (beat) is missing from the CHIPS data cannot be counted in the correct patrol division or sector, and therefore the totals for the individual patrol divisions/sectors will not add up to the citywide totals which include these incidents*

## UCR PART 1 PROPERTY CRIME BEAT THRESHOLDS

UCR Part 1 Property Crimes for the city of Glendale for the most recent week in this report totaled: 205 offenses. The average number of Part 1 Property crimes citywide is 228.8; the minimum was 200; and the maximum was 267. This means that the most recent week was below the average for the city. In addition, 68% of the weeks had between 210.9 and 246.7 offenses. This indicates that Part 1 Property Crimes were BELOW 'normal range' for the city this week.

### FOOTHILLS BEATS

UCR Part 1 Property Crimes for the Patrol District 40 for the most recent week in this report totaled: 55 offenses. The average number of Part 1 Property crimes for Patrol District 40 is 57.4; the minimum was 42; and the maximum was 77. This means that the most recent week was below the average for this district. In addition, 68% of the weeks had between 49.9 and 64.8 offenses. This indicates that Part 1 Property Crimes were at or below average and within 'normal range' for this district. this week.

UCR Part 1 Property Crimes for the Patrol District 50 for the most recent week in this report totaled: 68 offenses. The average number of Part 1 Property crimes for Patrol District 50 is 66.4; the minimum was 49; and the maximum was 91. This means that the most recent week was above the average for this district. In addition, 68% of the weeks had between 54.2 and 78.5 offenses. This indicates that Part 1 Property Crimes were at or above average and within 'normal range' for this district. this week.

### DATA WHERE THE BEAT IS MISSING FROM CHIPS (District 99)

UCR Part 1 Property Crimes for the Patrol District 99 for the most recent week in this report totaled: 4 offenses. The average number of Part 1 Property crimes for Patrol District 99 is 2.2; the minimum was 0; and the maximum was 6. This means that the most recent week was above the average for this district. In addition, 68% of the weeks had between .6 and 3.8 offenses. This indicates that Part 1 Property Crimes were ABOVE 'normal range' for this district, this week.

*Note: Incidents where the district (beat) is missing from the CHIPS data cannot be counted in the correct patrol division or sector, and therefore the totals for the individual patrol divisions/sectors will not add up to the citywide totals which include these incidents. District 99 is reported for both Gateway and Foothills reports and should not be added)*